

J J ROSE ARCHITECT

204 N. VIRGINIA AVE FAYETTEVILLE NORTH CAROLINA 28305

OUR REDEEMER LUTHERAN CHURCH NEW BATH ROOMS 1605 VAN BUREN AVE / FAYETTEVILLE NORTH CAROLINA 28303

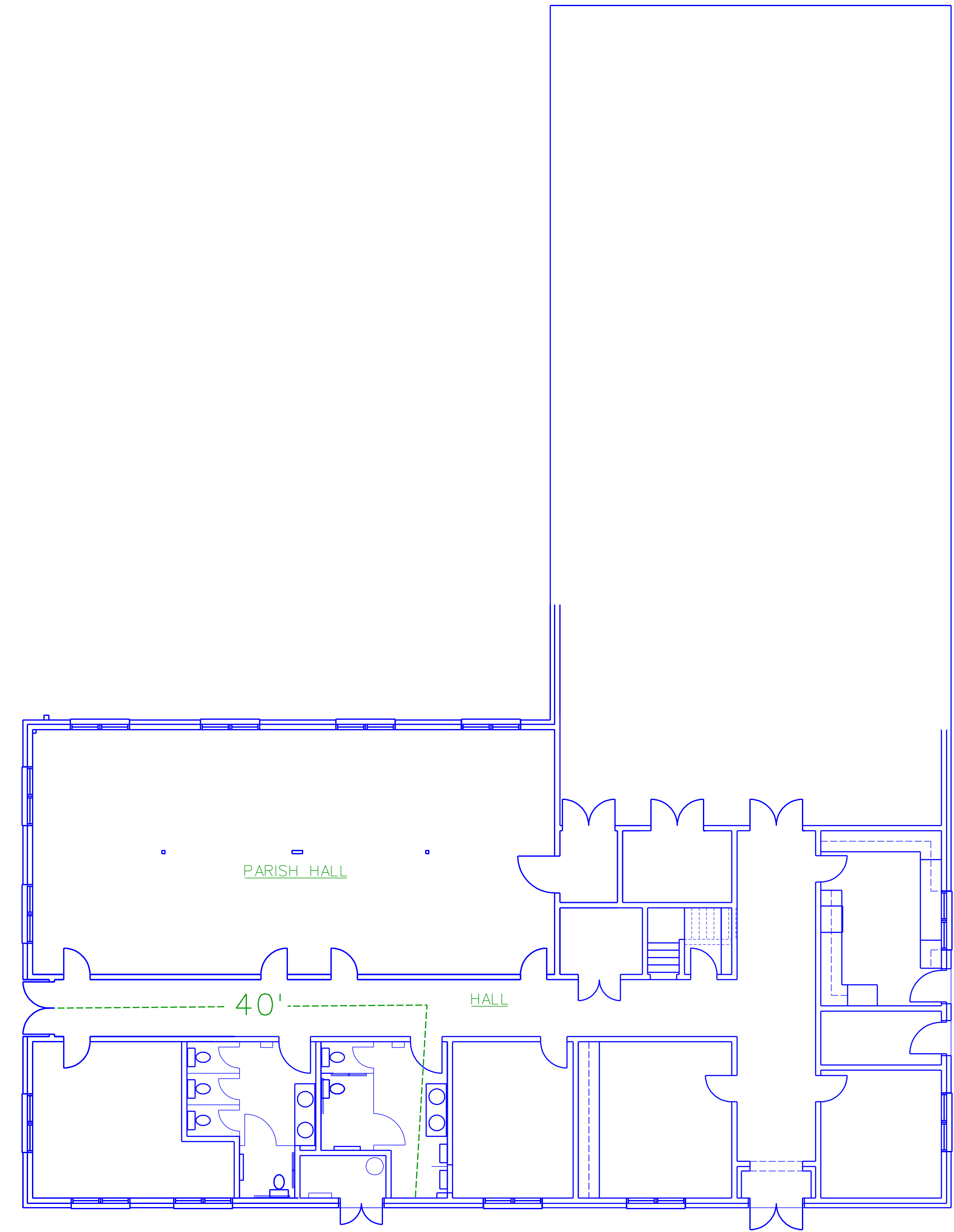
REVISIONS

Table with columns for ITEM, DATE, DESCRIPTION, DRAWN BY, CHECKED BY, DATE, PROJ CODE, SET NO., SHEET SUBJECT COVER.

SHEET NO.

A1 OF 2 SHEETS

OUR REDEEMER LUTHERAN CHURCH 1605 VAN BUREN AVE / FAYETTEVILLE NORTH CAROLINA 28303 NEW BATH ROOMS



LIFE SAFTY PLAN 1/8" = 1'-0"

Table with columns: Use Group, Area, No. of Occupants, Egress Width, Egress Width per Occupant, REQUIRED EXIT WIDTH, REQUIRED EXIT WIDTH (1005.1), Actual Shown on Plans, Actual Shown on Level.

Table with columns: Space Description, Area SF, Occupant Load Factor, Occupant Load, Exit Width, Exit Quantity.

Table with columns: Occupancy, Water Closets, Urinals, Lavatories, Showers/Tubs, Drink Fountains, Sinks, Accessible Sinks.

Table with columns: BUILDING DRAIN, NUMBER OF BUILDING DRAINS, NUMBER OF TOTAL FIXTURE UNITS, WATER SERVICE SIZE, NUMBER OF WATER SERVICES, TOTAL FIXTURE UNIT LOAD, NOTES.

Table with columns: Floor, Room or Space Designation, Min No. of Exits, Actual Travel Distance, Means of Egress, Means of Egress (1004.1), Actual Distance.

Table with columns: Floor, Room or Space Designation, Total Parking Spaces, Accessible Spaces Provided, Accessible Spaces Provided with 5' Access Aisle, Accessible Spaces Provided with 8' Access Aisle.

Table with columns: Floor, Room or Space Designation, Min No. of Exits, Actual Travel Distance, Means of Egress, Means of Egress (1004.1), Actual Distance.

Table with columns: Floor, Room or Space Designation, Min No. of Exits, Actual Travel Distance, Means of Egress, Means of Egress (1004.1), Actual Distance.

Table with columns: Floor, Room or Space Designation, Min No. of Exits, Actual Travel Distance, Means of Egress, Means of Egress (1004.1), Actual Distance.

Table with columns: Floor, Room or Space Designation, Min No. of Exits, Actual Travel Distance, Means of Egress, Means of Egress (1004.1), Actual Distance.

Table with columns: Floor, Room or Space Designation, Min No. of Exits, Actual Travel Distance, Means of Egress, Means of Egress (1004.1), Actual Distance.

Table with columns: Floor, Room or Space Designation, Min No. of Exits, Actual Travel Distance, Means of Egress, Means of Egress (1004.1), Actual Distance.

Table with columns: Floor, Room or Space Designation, Min No. of Exits, Actual Travel Distance, Means of Egress, Means of Egress (1004.1), Actual Distance.

Table with columns: Floor, Room or Space Designation, Min No. of Exits, Actual Travel Distance, Means of Egress, Means of Egress (1004.1), Actual Distance.

Table with columns: Floor, Room or Space Designation, Min No. of Exits, Actual Travel Distance, Means of Egress, Means of Egress (1004.1), Actual Distance.

Table with columns: Floor, Room or Space Designation, Min No. of Exits, Actual Travel Distance, Means of Egress, Means of Egress (1004.1), Actual Distance.

Table with columns: Floor, Room or Space Designation, Min No. of Exits, Actual Travel Distance, Means of Egress, Means of Egress (1004.1), Actual Distance.

Table with columns: Floor, Room or Space Designation, Min No. of Exits, Actual Travel Distance, Means of Egress, Means of Egress (1004.1), Actual Distance.

Table with columns: Floor, Room or Space Designation, Min No. of Exits, Actual Travel Distance, Means of Egress, Means of Egress (1004.1), Actual Distance.

Table with columns: Floor, Room or Space Designation, Min No. of Exits, Actual Travel Distance, Means of Egress, Means of Egress (1004.1), Actual Distance.

Table with columns: Floor, Room or Space Designation, Min No. of Exits, Actual Travel Distance, Means of Egress, Means of Egress (1004.1), Actual Distance.

Table with columns: Floor, Room or Space Designation, Min No. of Exits, Actual Travel Distance, Means of Egress, Means of Egress (1004.1), Actual Distance.

CITY OF FAYETTEVILLE - BUILDING CODE SUMMARY FOR ALL COMMERCIAL PROJECTS - NC 2012 BUILDING CODE (EXCEPT 1 AND 2-FAMILY DWELLINGS AND TOWNHOUSES)

Name of Project: OUR REDEEMER LUTHERAN CHURCH Address: 1605 VAN BUREN AVE FAY NC 28303

PROJECT SUMMARY: 338 S.F. UNDER ROOF EXISTING ALTERED Building description: SLAB FOUNDATION, WOOD, STUD WALLS, P.F./P.E. ROOF TRUSS

LEAD DESIGN PROFESSIONAL: J.J. ROSE ARCHITECT Designer: J.J. ROSE ARCHITECT JOHN J. ROSE

NEW BUILDING: () NEW BUILDING () SHELL BUILDING () FIRST TIME INTERIOR UPFIT () ADDITION () ALTERATION TO SHELL

ACCESSIBILITY COMPLIANCE FORM (WHEN APPLICABLE) EXISTING BUILDING () Renovation () Interior completion () Tenant Alteration

OCCUPANCY INFORMATION Primary Occupancies: Assembly () A-1 () A-2 () A-3 () A-4 () A-5

Mixed Occupancy: X No () Yes Separation: () No () Yes Exception: ()

Other Uses: () 1008.2.1 Accessory Uses () 1008.2.2 Incidental Uses

REQUIRED INCREASE FORMULA ALLOWABLE AREA FORMULA INCREASE = 100(F/P-0.25)W/30

Table with columns: EXTERIOR WALL, ACTUAL LENGTH, OPEN LENGTH, WIDTH OF PUBLIC WAY OR OPEN SPACE.

BOTH BUILDING AND TENANT MUST BE INDICATED ON CHART BELOW

Table with columns: Story No., Occupancy, (A) Building Area, (B) Open Space Area, (C) Area for Sprinkler Increase, (D) Area for Increase, (E) Rating of Sprinkler, (F) Rating of Alarm, (G) Rating of Detection, (H) Rating of Hardware.

1. Open space area increases from Section 506.2 are computed thus: a. Perimeter which fronts a public way or open space having 20 feet minimum width + (F/P) b. Total Building Perimeter + (F/P) c. Ratio (F/P) + (F/P) d. W = Minimum width of public way + (F/P) e. Percent of frontage increase = 100 (F/P - 0.25) W/30 + (F/P) f. The sprinkler increase per Section 506.3 is as follows: a. Multi-story building is + 200 percent b. Single story building is + 300 percent

2. Unlimited area applicable under conditions of Sections Group B, F, M, S, A-4 (507.1), 507.2, 507.3, 507.4, 507.7; Group A motion picture (507.8); Malls (507.11.6); and H-2 aircraft point hangars (507.9)

3. Maximum Building Area + total number of stories in the building + E but not greater than 3 + E. The maximum area of parking garages must comply with 403.8.5. The maximum area of air traffic control towers must comply with 402.3.

1. Corridor dead ends (Section 1004.3.2.3) 2. Single exits (Table 1004.2.2) 3. Common Path of Travel (Section 1004.2.5)

Table with columns: Allowable Height, Increase for Sprinkler, Shown on Plans, Code Reference.

BUILDING DATA New Construction () Renovation (Existing Bldg) () Upfit () Alteration Construction Type: () A () B () C () D () E () F () G () H () I () J () K () L () M () N () O () P () Q () R () S () T () U () V () W () X () Y () Z

SPRINKLERS: () No () Yes () Partially Sprinklered () Special suppression

STANDPIPE: () No () Yes () Dry () Wet () Flood Hazard

GRASS BUILDING AREA: Basement, Ground Floor, Mezzanine, 2nd Floor, 3rd Floor, 4th Floor, TOTAL

Area of Project / Tenant / Alteration / Renovation: 338 S.F. BATH ROOM ALTERATION

EXISTING FIRE PROTECTION REQUIREMENTS This section required for all projects

Life Safety Plan Sheet No. AI, if provided

Structural Frame, including columns, girders, trusses

Bearing walls

Nonbearing walls and partitions

Shafts-Exit

Corridor Separation

Occupancy Separation

Party/Fire Wall Separation

Smoke Barrier Separation

PERCENTAGE OF WALL OPENING CALCULATIONS This section required for additions, new and change of use

NO LIMIT

WALL LEGENDS This section required for all projects

1. Fire Partitions 700 2. Fire Walls 706 3. Fire Barriers 707 4. Smoke Partitions 711 5. Smoke Barriers 710 6. Shaft Enclosure 708

LIFE SAFETY SYSTEM REQUIREMENTS Emergency Lighting: () No () Yes Exit Signs: () No () Yes Fire Alarm: () No () Yes Smoke Detection System: () No () Yes Panic Hardware: () No () Yes

EXIT REQUIREMENTS NUMBER AND ARRANGEMENT OF EXITS This section required for all projects

Table with columns: Floor, Room or Space Designation, Min No. of Exits, Actual Travel Distance, Means of Egress, Means of Egress (1004.1), Actual Distance.

Table with columns: Floor, Room or Space Designation, Min No. of Exits, Actual Travel Distance, Means of Egress, Means of Egress (1004.1), Actual Distance.

Table with columns: Floor, Room or Space Designation, Min No. of Exits, Actual Travel Distance, Means of Egress, Means of Egress (1004.1), Actual Distance.

Table with columns: Floor, Room or Space Designation, Min No. of Exits, Actual Travel Distance, Means of Egress, Means of Egress (1004.1), Actual Distance.

Table with columns: Floor, Room or Space Designation, Min No. of Exits, Actual Travel Distance, Means of Egress, Means of Egress (1004.1), Actual Distance.

Table with columns: Floor, Room or Space Designation, Min No. of Exits, Actual Travel Distance, Means of Egress, Means of Egress (1004.1), Actual Distance.

Table with columns: Floor, Room or Space Designation, Min No. of Exits, Actual Travel Distance, Means of Egress, Means of Egress (1004.1), Actual Distance.

OCCUPANT LOAD AND EXIT WIDTH This section required for all projects

Table with columns: Use Group, Area, No. of Occupants, Egress Width, Egress Width per Occupant, REQUIRED EXIT WIDTH, REQUIRED EXIT WIDTH (1005.1), Actual Shown on Plans, Actual Shown on Level.

1. See Table 1004.1.1 to determine whether net or gross area is applicable.

2. Minimum stairway width (Section 1009.1); min. corridor width (Section 1018.2); min. door width (Section 1008.1.1)

4. Minimum width of exit passageway (Section 1023.2)

5. The loss of one means of egress shall not reduce the available capacity to less than 50 percent of the total required (Section 1005.1)

6. Assembly occupancies (Section 1028)

ASSEMBLY OCCUPANCY INFORMATION This section must be completed to identify the occupancy capacity for ALL projects

Table with columns: Space Description, Area SF, Occupant Load Factor, Occupant Load, Exit Width, Exit Quantity.

Table with columns: Occupancy, Water Closets, Urinals, Lavatories, Showers/Tubs, Drink Fountains, Sinks, Accessible Sinks.

NO CHANGE TO EXISTING STRUCTURE !! STRUCTURAL DESIGN LOADS

1. See codebook

2. Roof Live Load

3. Floor Live Load

4. Ground Snow Load (psf)

5. Seismic Site Class

6. Seismic Design Category

7. Live Load

8. Floor Live Load (indicate area)

9. Roof Live Load (indicate area)

10. Live Load Reduction used in design

11. Roof Snow Load Data

12. Snow Exposure Factor (e)

13. Thermal Factor (t)

14. Wind Exposure

15. Wind Exposure

16. Components and cladding load

17. Wind Snow Slew (s)

18. Earthquake Design Data

19. Occupancy Category

20. Maximum Spectral Response Acceleration S_s

21. Maximum Spectral Response Acceleration S₁

22. Site Class

23. Spectral Response Coefficient, S_s

24. Spectral Response Coefficient, S₁

25. Seismic Design Category

26. Basic Seismic Force Resisting System

27. Seismic Response Coefficient, R

28. Response modification factor, R_s

29. Analysis procedure used

30. Seismic base shear V_y

31. Seismic base shear V_x

32. Soil Data

33. Soil Bearing Capacities

34. Field Test (provide copy of test report)

35. Presumptive Bearing Pressure

36. Bearing Pressure Per Soils Report

37. Deep Foundation Type

38. Deep Foundation Allowable Loads

39. Uplift

40. Lateral

41. Accessible Parking

42. Accessible Parking

43. Accessible Spaces Provided

44. Accessible Spaces Provided with 5' Access Aisle

45. Accessible Spaces Provided with 8' Access Aisle

46. Accessible Spaces Provided

47. Accessible Spaces Provided

48. Accessible Spaces Provided

49. Accessible Spaces Provided

50. Accessible Spaces Provided

51. Accessible Spaces Provided

52. Accessible Spaces Provided

53. Accessible Spaces Provided

54. Accessible Spaces Provided

55. Accessible Spaces Provided

56. Accessible Spaces Provided

57. Accessible Spaces Provided

58. Accessible Spaces Provided

59. Accessible Spaces Provided

60. Accessible Spaces Provided

61. Accessible Spaces Provided

62. Accessible Spaces Provided

63. Accessible Spaces Provided

64. Accessible Spaces Provided

65. Accessible Spaces Provided

66. Accessible Spaces Provided

67. Accessible Spaces Provided

68. Accessible Spaces Provided

69. Accessible Spaces Provided

70. Accessible Spaces Provided

71. Accessible Spaces Provided

72. Accessible Spaces Provided

73. Accessible Spaces Provided

74. Accessible Spaces Provided

75. Accessible Spaces Provided

76. Accessible Spaces Provided

77. Accessible Spaces Provided

78. Accessible Spaces Provided

79. Accessible Spaces Provided

80. Accessible Spaces Provided

81. Accessible Spaces Provided

82. Accessible Spaces Provided

83. Accessible Spaces Provided

84. Accessible Spaces Provided

85. Accessible Spaces Provided

86. Accessible Spaces Provided

87. Accessible Spaces Provided

88. Accessible Spaces Provided

89. Accessible Spaces Provided

90. Accessible Spaces Provided

91. Accessible Spaces Provided

92. Accessible Spaces Provided

93. Accessible Spaces Provided

94. Accessible Spaces Provided

95. Accessible Spaces Provided

96. Accessible Spaces Provided

97. Accessible Spaces Provided

98. Accessible Spaces Provided

99. Accessible Spaces Provided

100. Accessible Spaces Provided

101. Accessible Spaces Provided

102. Accessible Spaces Provided

103. Accessible Spaces Provided

104. Accessible Spaces Provided

105. Accessible Spaces Provided

106. Accessible Spaces Provided

107. Accessible Spaces Provided

108. Accessible Spaces Provided

109. Accessible Spaces Provided

110. Accessible Spaces Provided

111. Accessible Spaces Provided

112. Accessible Spaces Provided

113. Accessible Spaces Provided

114. Accessible Spaces Provided

115. Accessible Spaces Provided

116. Accessible Spaces Provided

117. Accessible Spaces Provided

118. Accessible Spaces Provided

119. Accessible Spaces Provided

120. Accessible Spaces Provided

121. Accessible Spaces Provided

122. Accessible Spaces Provided

123. Accessible Spaces Provided

124. Accessible Spaces Provided

125. Accessible Spaces Provided

126. Accessible Spaces Provided

127. Accessible Spaces Provided

128. Accessible Spaces Provided

129. Accessible Spaces Provided

130. Accessible Spaces Provided

131. Accessible Spaces Provided

132. Accessible Spaces Provided

133. Accessible Spaces Provided

134. Accessible Spaces Provided

135. Accessible Spaces Provided

136. Accessible Spaces Provided

137. Accessible Spaces Provided

138. Accessible Spaces Provided

139. Accessible Spaces Provided

140. Accessible Spaces Provided

141. Accessible Spaces Provided

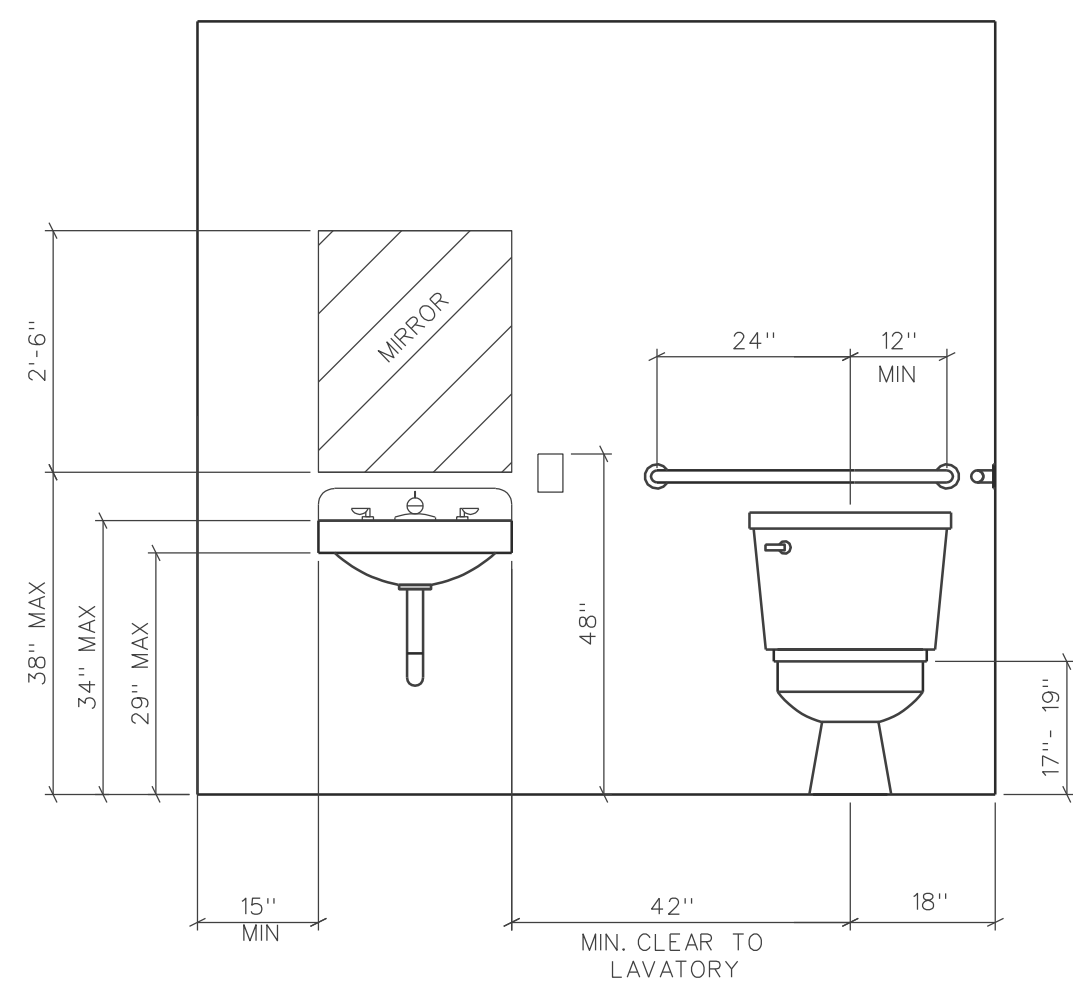
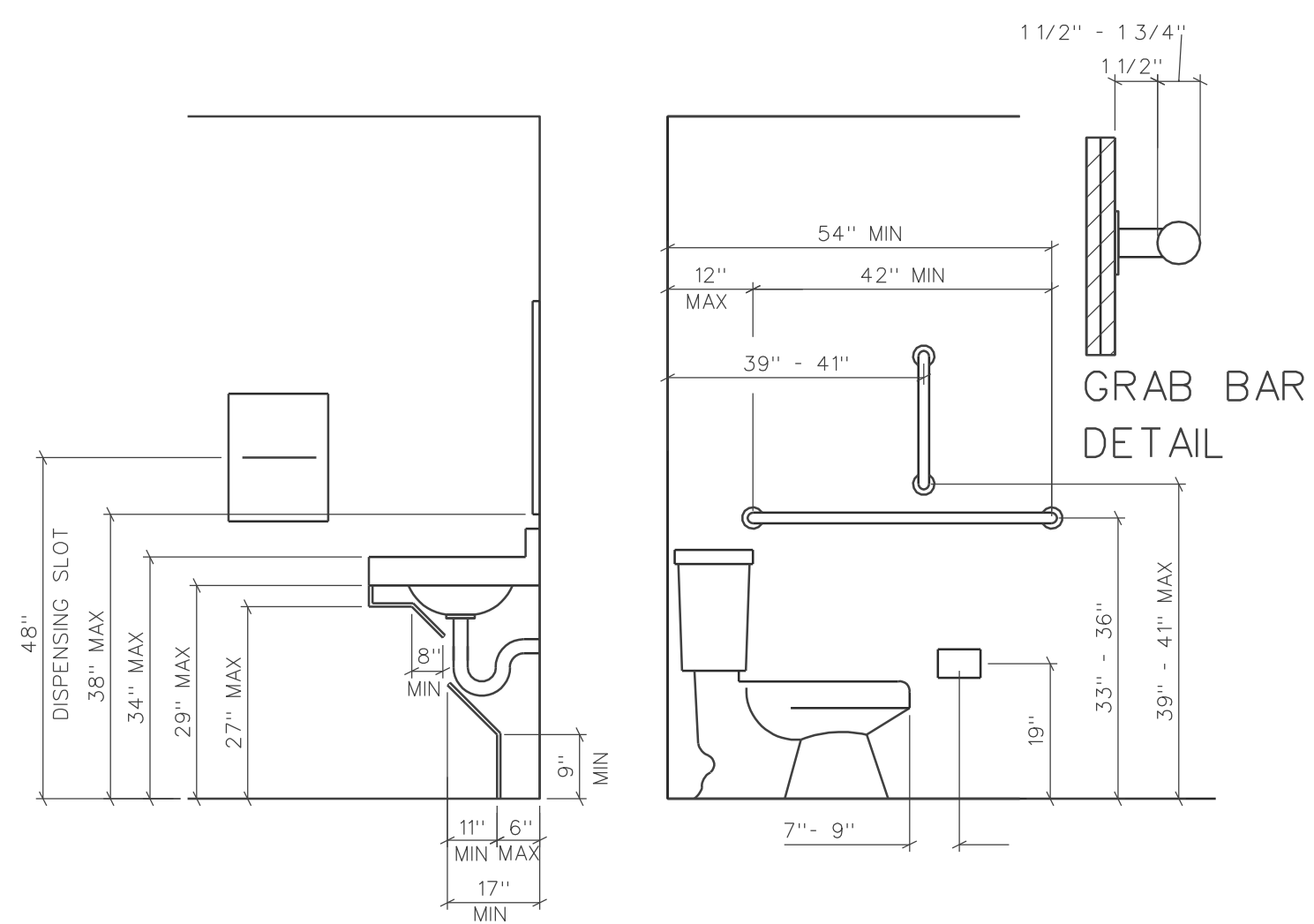
142. Accessible Spaces Provided

143. Accessible Spaces Provided

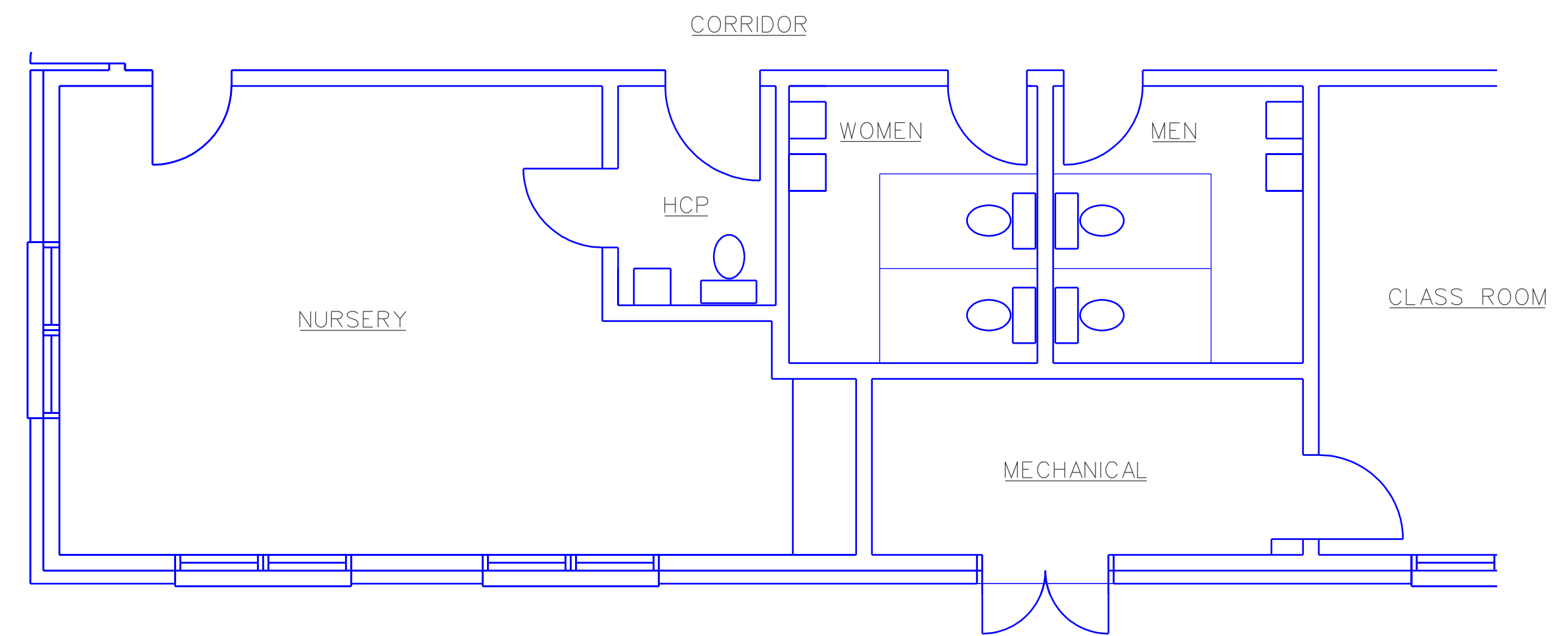
144. Accessible Spaces Provided

145. Accessible Spaces Provided

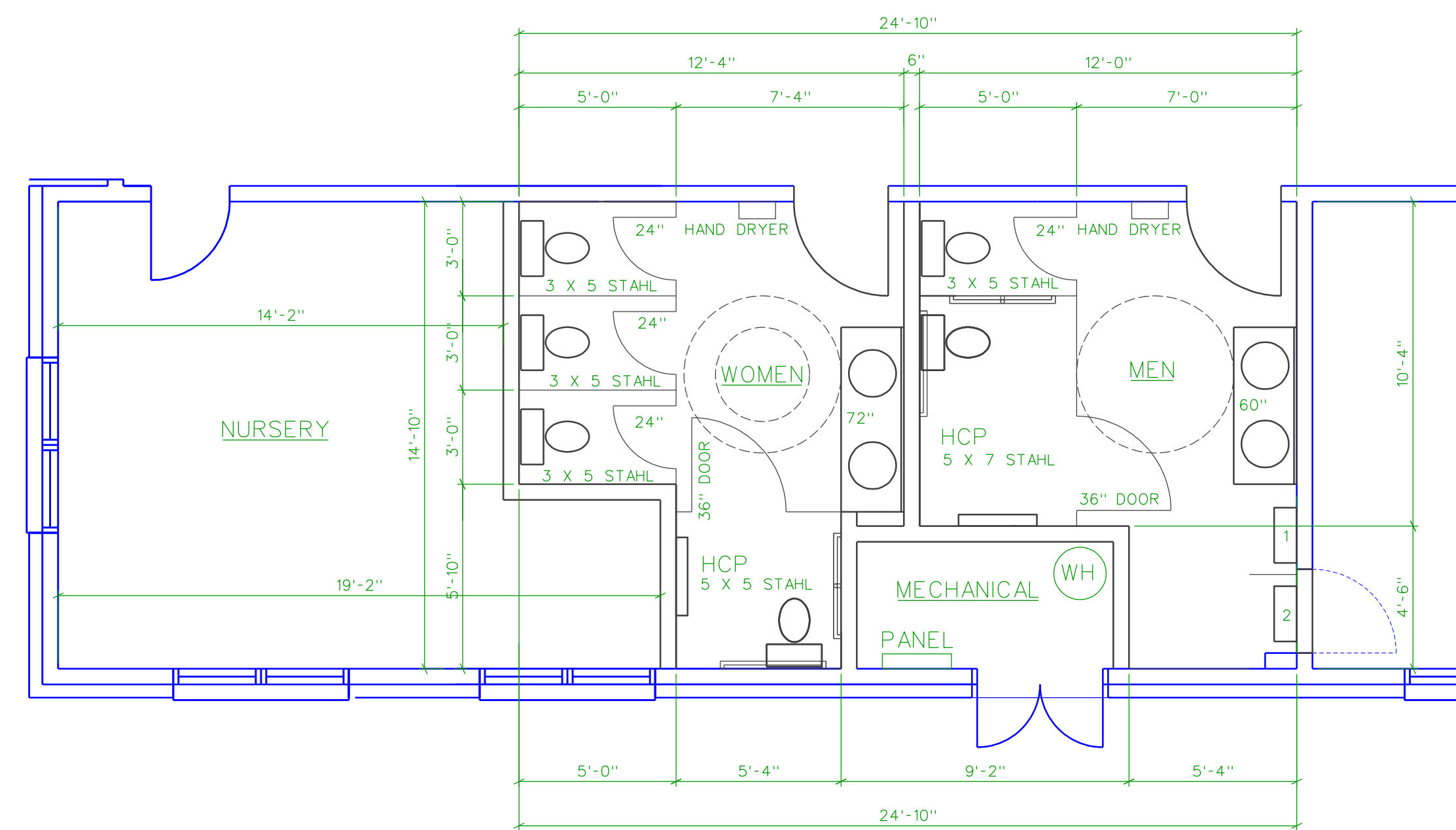
146. Accessible Spaces Provided



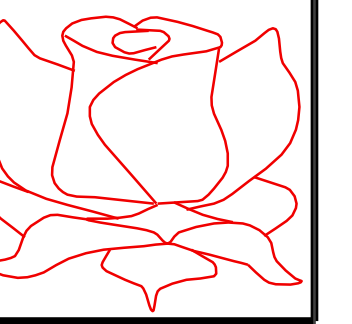
HCP RESTROOM ELEVATIONS
1/2" = 1'-0"



EXISTING FLOOR PLAN
1/4" = 1'-0"



NEW FLOOR PLAN 338 S.F.
1/4" = 1'-0"



J J ROSE
ARCHITECT
204 N. VIRGINIA AVE
FAYETTEVILLE
NORTH CAROLINA 28305
910 286 2766

OUR REDEEMER LUTHERAN CHURCH
MEN AND WOMEN RESTROOM PLANS
1605 VAN BUREN AVE / FAYETTEVILLE NORTH CAROLINA 28303

REVISIONS

NO.	DATE	DESCRIPTION

DRAWN BY TS
CHECKED BY JR
DATE 6-28-17
PROJ CODE
SET NO.
SHEET SUBJECT
TOILET PLAN

SHEET NO.
A2
OF 2 SHEETS

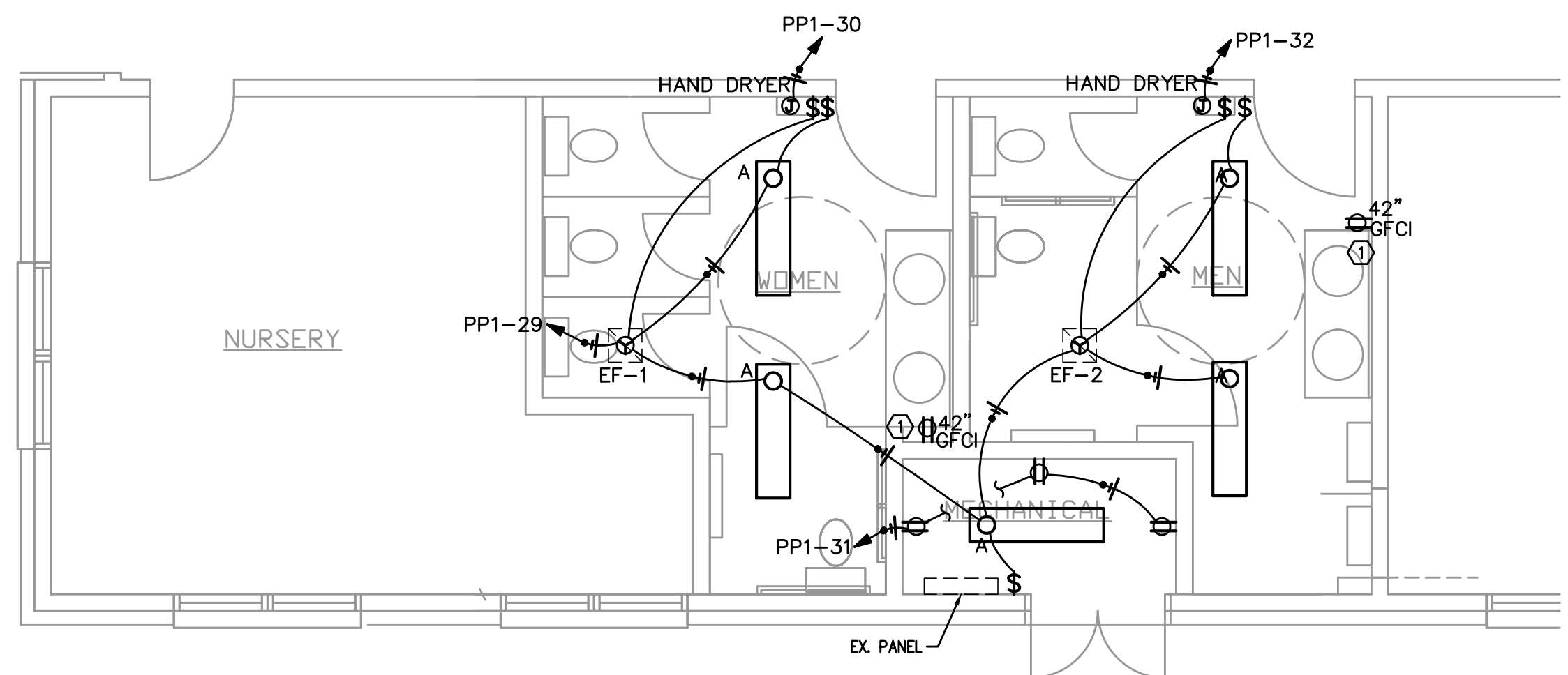
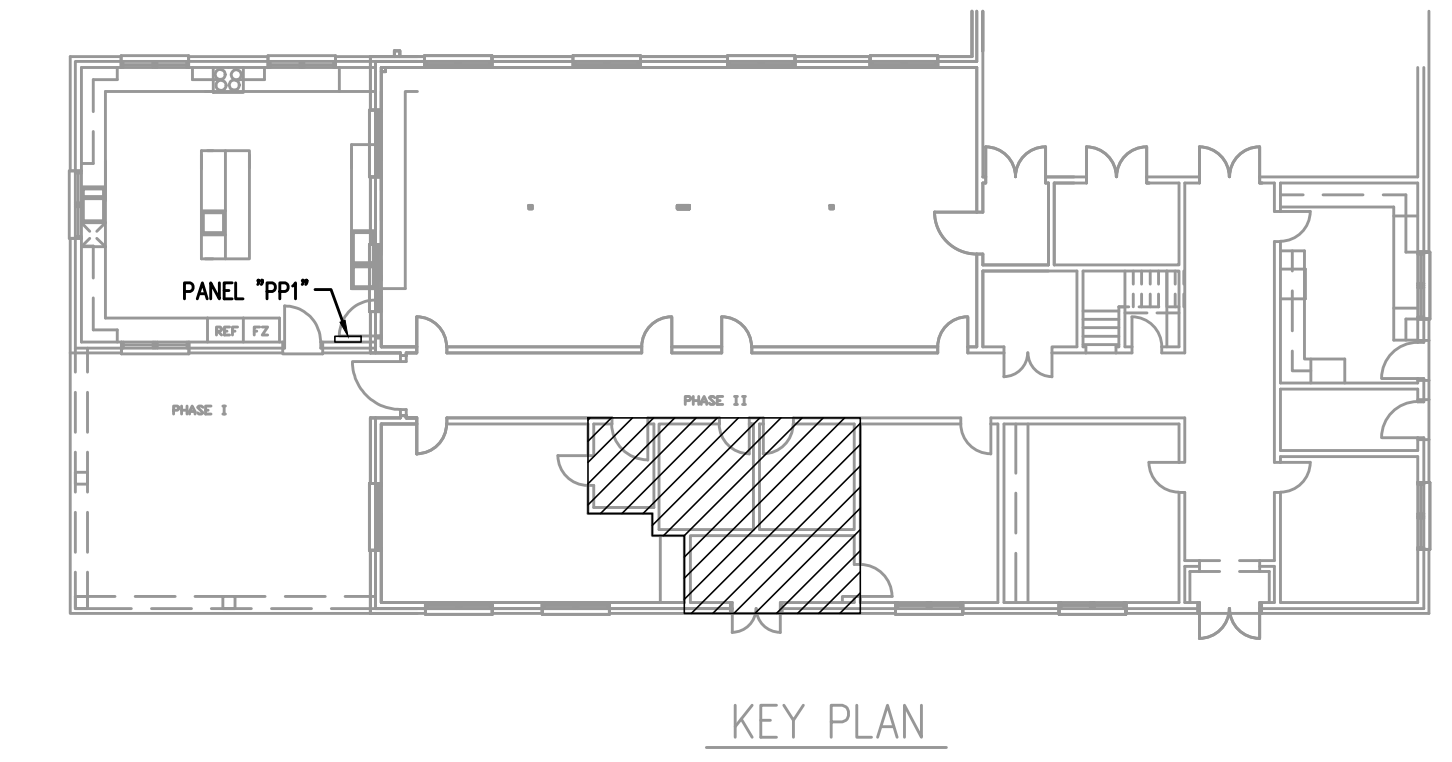
**2012 North Carolina
Energy Conservation Code**
Commercial Energy Efficiency - Electrical Summary

THIS SECTION REQUIRED FOR ALL PROJECTS THAT INCLUDE ELECTRICAL DESIGN

- 501.1 METHOD OF COMPLIANCE NO SPECIFIC COMCHECK PROVIDED
X 2012 NCECC CHAPTER 5 20% IMPROVEMENT OVER ASHRAE 90.1-2007
- 501.2 APPLICATION COMPLIANCE
 - 508.2.1 EFFICIENT MECH EQUIPMENT 508.2.4 HI EFFICIENCY DOMESTIC HW
 - X 508.2.2 REDUCED LTG DENSITY 508.2.5 ONSITE RENEWABLE ENERGY
 - 508.2.3 ENERGY RECOVERY SYSTEMS 508.2.6 DAYLIGHTING CONTROLS
- 505.2 INTERIOR LIGHTING CONTROLS (MANDATORY REQUIREMENTS)
 - INTERIOR LIGHTING SYSTEMS ARE PROVIDED WITH CONTROLS AS REQUIRED PER SECTION 505.2, EXCEPT WHERE EXEMPTED.
- 505.3- TANDEM WIRING (MANDATORY REQUIREMENTS)
 - X FLUORESCENT LUMINAIRES LOCATED WITHIN THE SAME AREA ARE TANDEM WIRED AS REQUIRED PER SECTION 505.3, EXCEPT WHERE EXEMPTED.
- 505.4- EXIT SIGNS (MANDATORY REQUIREMENTS)
 - X INTERNALLY ILLUMINATED EXIT SIGNS DO NOT EXCEED 5 WATTS PER SIDE.
- 505.5- INTERIOR LIGHTING POWER REQUIREMENTS (PRESCRIPTIVE) (NON-EXEMPT)
 - 505.5.1 - TOTAL CONNECTED INTERIOR LIGHTING POWER:
274 WATTS SPECIFIED
57 % REDUCTION OF SPECIFIED VS. ALLOWED
 - 505.5.2 - TOTAL ALLOWED INTERIOR LIGHTING POWER:
METHOD OF COMPLIANCE:
X BUILDING AREA METHOD SPACE-BY-SPACE METHOD
636 WATTS ALLOWED
 - 505.6.1 - EXTERIOR BUILDING GROUNDS LIGHTING:
X LAMPS OPERATING AT GREATER THAN 100 WATTS FOR EXTERIOR BUILDING GROUNDS LUMINAIRES HAVE A MINIMUM EFFICIENCY OF 60 LUMENS PER WATT.
 - 505.6.2 - EXTERIOR BUILDING LIGHTING POWER (NON-EXEMPT)
 - 505.6.2 - TOTAL CONNECTED EXTERIOR LIGHTING POWER:
WATTS SPECIFIED
 - 505.6.2 - TOTAL ALLOWED EXTERIOR LIGHTING POWER:
WATTS ALLOWED
 - 505.6.3 - SHIELDING OF EXTERIOR BUILDING LIGHTING FIXTURES:
X ONLY FULLY SHIELDED EXTERIOR BUILDING LIGHTING FIXTURES ARE PROVIDED, EXCEPT WHERE EXEMPTED.

 - ALTERNATIVE EXTERIOR BUILDING LIGHTING FIXTURES ARE PROVIDED FOR GREATER ENERGY EFFICIENCY OVER FULLY SHIELDED EXTERIOR BUILDING LIGHTING FIXTURES.
 - 505.7 - ELECTRICAL ENERGY CONSUMPTION (DWELLING UNITS):
N/A - SEPARATE TENANT METERING TO DETERMINE ELECTRICAL ENERGY CONSUMPTION HAS BEEN PROVIDED FOR BUILDINGS HAVING INDIVIDUAL DWELLING UNITS.

SIGNED: _____
NAME: CHRISTOPHER S. LOCKLEAR, PE
TITLE: ENGINEER



1 ELECTRICAL PLAN
E1 1/4"=1'

2 KEYED NOTES
M1 N.T.S.

① NEW BATHROOM RECEPT. CONNECT TO EX. BATHROOM RECEPT CIRCUIT.

CONTRACTOR SHALL COORDINATE WITH LOCAL UTILITY FOR SERVICE. A COMPLETE AND WORKING SYSTEM IS REQUIRED FOR COMPLIANCE WITH THESE DOCUMENTS. DETERMINE THE POINT OF CONNECTION TO THE UTILITY WITH THE UTILITY REPRESENTATIVE AND PROVIDE ACCORDINGLY FOR A COMPLETE WORKING SYSTEM.

WIRE AND CABLE SHALL BE INSULATED, TYPE THHN OR THWN, 600 VOLTS, WITH COPPER CONDUCTORS. CONDUCTOR SIZES NO. 8 AWG AND LARGER MAY BE STRANDED. CONDUCTORS SIZES NO. 10 AWG AND SMALLER MAY BE SOLID OR STRANDED. NO RMXEX PERMITTED.

EMT SHALL BE GALVANIZED STEEL TUBING, 1/2-INCH MINIMUM SIZE, EQUAL TO ELECTRINITE BRAND OR APPROVED AND USED ONLY WITH HEXAGONAL ALL STEEL COMPRESSION FITTINGS.

PLASTIC CONDUIT SHALL BE RIGID, 3/4-INCH MINIMUM NON-METALLIC, HEAVY DUTY, HIGH IMPACT, POLYVINYLCHLORIDE (PVC), TYPE I WILL BE USED FOR CONCRETE ENCASUREMENT, FITTINGS SHALL BE THE SAME MATERIALS AND MANUFACTURER AS THE PLASTIC CONDUIT.

FLEXIBLE METAL CONDUIT SHALL BE 1/2- INCH MINIMUM SINGLE STRIP, STEEL, HOT DIPPED GALVANIZED INSIDE AND OUTSIDE, MAXIMUM LENGTH 72 INCHES FOR LIGHTING AND 36" FOR MOTORS. FLEXIBLE METAL CONDUIT SHALL BE LIQUDTIGHT OR WATERTIGHT WITH PVC JACKET WHERE USED IN DAMP, WET OR OUTSIDE AREAS, AND LIQUDTIGHT OR WATERTIGHT CONNECTORS SHALL BE USED.

NO RECEPTACLES OR TEL. OUTLETS TO BE MOUNTED BACK TO BACK, KEEP AT LEAST 2 INCHES BETWEEN RECEPTACLES AND TEL. OUTLETS.

ALL CONDUCTOR SHALL BE COPPER WITH A MINIMUM SIZE OF #12 AWG EXCEPT FOR FIRE ALARM. THESE CONDUCTORS SHOULD COMPLY WITH NFPA.

CONTRACTOR SHALL ALIGN FIXTURES, SMOKE DETECTORS, CEILING DIFFUSERS ETC. AS REQUIRED TO PROVIDE A UNIFORM PRESENTATION. AT NO TIME WILL AN IONIZATION DETECTOR BE LOCATED WITHIN 3'-0" OF A SUPPLY OR RETURN AIR

CIRCUIT BREAKERS AND WIRE ARE SIZED FOR SPECIFIC EQUIPMENT. BEFORE ORDERING WIRE, BREAKERS AND CONDUIT FOR THIS PROJECT THE CONTRACTOR SHALL COORDINATE WITH THE OTHER CONTRACTORS ON THE JOB AND VERIFY THE ELECTRICAL DATA FOR THE EQUIPMENT WHICH WILL ACTUALLY BE INSTALLED, RECOMPUTING WIRE AND BREAKER SIZES IF REQUIRED BY THE NEC.

ALL CONDUIT TERMINATING IN THE CEILING CAVITIES IS TO BE LABELED.

ALL CONDUIT SHALL BE COLOR CODED WITH 1/2" WIDE TAPE, 10'-0" ON CENTER IN ACCORDANCE WITH STANDARD INDUSTRY PRACTICE.

THE MOUNTING HEIGHTS AND LOCATIONS OF ALL WALL MOUNTED OUTLETS AND JUNCTION BOXES SHALL BE REVIEWED AND COORDINATED WITH THE ARCHITECT AND OWNER, PRIOR TO INSTALLATION, FOR USE WITH ACTUAL EQUIPMENT.

EACH CONTRACTOR WILL PROVIDE HIS OWN SUPPORT OF ALL DEVICES AND EQUIPMENT PROVIDED BY HIM AND SHALL SUPPORT SUCH EQUIPMENT PER APPROVED GOVERNING CODES OR PER APPROVAL OF THE ENGINEER/ARCHITECT. UNACCEPTABLE WORKMANSHIP OR MATERIALS SHALL BE REPLACED AT THE REQUEST OF THE ENGINEER/ARCHITECT AT THE CONTRACTOR'S EXPENSE.

THE CONTRACTOR SHALL REFER TO THE ARCHITECTURAL PLANS FOR FLOOR PLAN DIMENSIONS.

THE CONTRACTOR SHALL COORDINATE ANY AND ALL WORK WITH OTHER TRADES INVOLVED IN THIS PROJECT PRIOR TO THE INSTALLATION OF HIS EQUIPMENT, SO AS TO AVOID CONFLICTS DURING CONSTRUCTION AND ALLOW FOR OPTIMUM WORKING SPACE AND MAINTENANCE.

ALL FUSES DISCONNECT SWITCHES AND BREAKER SIZES SHOWN FOR MECHANICAL EQUIPMENT SHALL BE VERIFIED BEFORE PURCHASE AND INSTALLATION OF SAID EQUIPMENT WITH THE EQUIPMENT SUPPLIER AND MECHANICAL CONTRACTOR.

WHERE EQUIPMENT PENETRATES EXTERIOR WALL OR ROOF THEY SHALL BE PROPERLY SEALED WITH METHODS APPROVED BY THE ARCHITECT/ENGINEER.

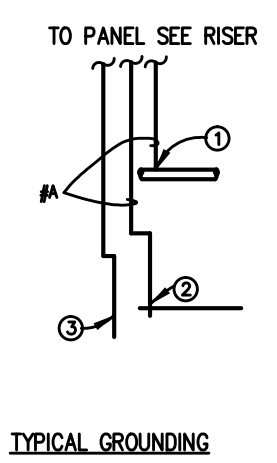
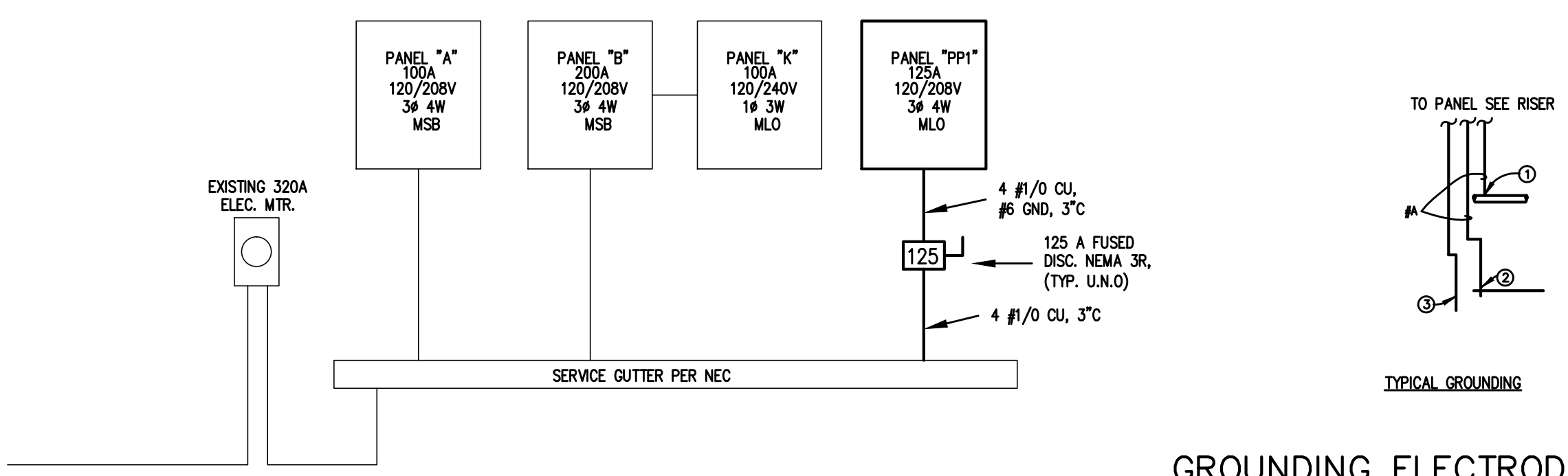
ALL WORK IS TO BE DONE IN STRICT COMPLIANCE WITH THE LATEST VERSION OF THE NEC AND APPLICABLE STATE CODES

RECESSED FIXTURES INSTALLED IN RATED ASSEMBLIES SHALL BE INSTALLED WITH AN ENCLOSURE SO AS TO MAINTAIN THE RATING OF ASSEMBLY.

LUMINAIRE SCHEDULE

CALLOUT	SYMBOL	LAMP	DESCRIPTION	BALLAST	MOUNTING	MODEL	INPUT WATTS	VOLTS
A		(1) LED	8" x 48" LED W/ ACRYLIC PRISMED WRAPAROUND LENS AND FROSTED OVERLAY.	ELECTRONIC	SURFACE	COLUMBIA LIGHTING, LAW4-40HL-EU	54.8	120V 1P 2W

NOTE: PP1 TO BE INSTALLED IN FELLOWSHIP HALL PHASE OF WORK (CONCURRENT WITH THIS PHASE)



GROUNDING ELECTRODE DETAILS

GROUNDING ELECTRODE CONDUCTORS SHALL BE #4 BARE COPPER. OTHER MATERIAL AND INSTALLATION PER NEC

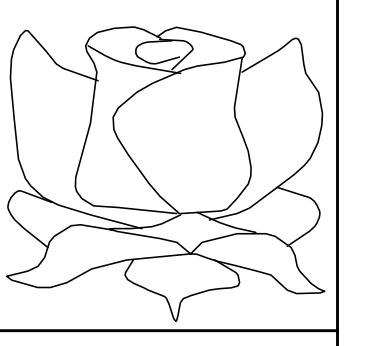
- ① CONNECT TO METALIC WATER PIPE AS REQ'D.
- ② #4 COPPER GROUND PLACED TO BLDG STEEL
- ③ 3/4"x10' LONG COPPER CLAD GROUNDING ROD W/ #6 COPPER GROUND.

A=#6 CU PP1

1 ELECTRICAL NOTES
E1 N.T.S.

3 ELECTRICAL RISER
E1 N.T.S.

PP1				PP1								
ROOM	MOUNTING	FLUSH	FED FROM	VOLTS	BUS AMPS	NEUTRAL	AIC	10,000	MAIN BKR	MLO	LUGS	STANDARD
FRZ.	20/1	0.8	FRZ.	20/1	0.943	HOOD, LIGHTING						
REF.	20/1	0.8	REF.	50/2	7.9	AHU-1						
RECEPT	20/1	0.36	RECEPT	6								
RECEPT	20/1	0.36	RECEPT	8	3.96	HP-1						
DW	20/1	1.2	DW	10								
RECEPT	20/1	0.36	RECEPT	12								
RECEPT	20/1	0.54	RECEPT	14	0.72	RECEPT						
RECEPT	20/1	0.36	RECEPT	16	0.72	RECEPT						
RANGE	40/2	8	RANGE	18	0.9	RECEPT						
DOUBLE OVEN	40/2	8.21	DOUBLE OVEN	20	0.36	RECEPT						
DOUBLE OVEN	40/2	8.21	DOUBLE OVEN	22	8.21	DOUBLE OVEN						
RECEPT	20/1	0.36	RECEPT	24								
RECEPT	20/1	0.8	RECEPT	26	0.864	FIRE SHUTTER						
ICE	20/1	0.8	ICE	28	0.36	RECEPT						
EF-1, EF-2, LIGHTING	20/1	0.447	EF-1, EF-2, LIGHTING	30	1.45	HAND DRYER						
RECEPTACLE	20/1	0.54	RECEPTACLE	32	1.45	HAND DRYER						
SPARE	-/1	0	SPARE	34	0	SPARE						
SPARE	-/1	0	SPARE	36	0	SPARE						
SPARE	-/1	0	SPARE	38	0	SPARE						
SPARE	-/1	0	SPARE	40	0	SPARE						
SPARE	-/1	0	SPARE	42	0	SPARE						
				CONN KVA		CALC KVA		CONN KVA		CALC KVA		
LIGHTING				0.857	1.07	(125%)	CONTINUOUS	0	0	(125%)		
LARGEST MOTOR				3.96	0.99	(25%)	HEATING	10.8	10.8	(100%)		
OTHER MOTORS				1.04	1.04	(100%)	COOLING	3.96	0	(0%)		
RECEPTACLES				8.34	8.34	(50%-10)	NONCONTINUOUS	0.36	0.36	(100%)		
KITCHEN EQUIP				25.6	16.7	(65%)	DIVERSE	0	0	(N/A)		
						METERED DEMAND		0	0	(125%)		
				TOTAL KVA				51	39.3			
				BALANCED 3-PHASE AMPS				109	109			
				PHASE BALANCE PERCENT:				PHASE A 70.5%	PHASE B 108%	PHASE C 122%		



J J ROSE
ARCHITECT

204 N. VIRGINIA AVE
FAYETTEVILLE
NORTH CAROLINA 28305
910 286 2766

OUR REDEEMER LUTHERAN CHURCH
MENS AND WOMEN RESTROOM PLANS

1605 VAN BUREN AVE / FAYETTEVILLE NORTH CAROLINA 28303

REVISIONS

NO.	DATE	DESCRIPTION

DRAWN BY TS
CHECKED BY JR
DATE 3-22-17
PROJ CODE
SET NO.
SHEET SUBJECT

SHEET NO.

E-1

Coastal Plains Engineering, P.A.
FIRM # C-2059

296 Locklear Rd
P.O. Box 1117
Pembroke, NC 28372
Voice: 910-521-7213
Fax: 910-521-7213
www.coastalplainseng.com

