

ASSEMBLY ROOM

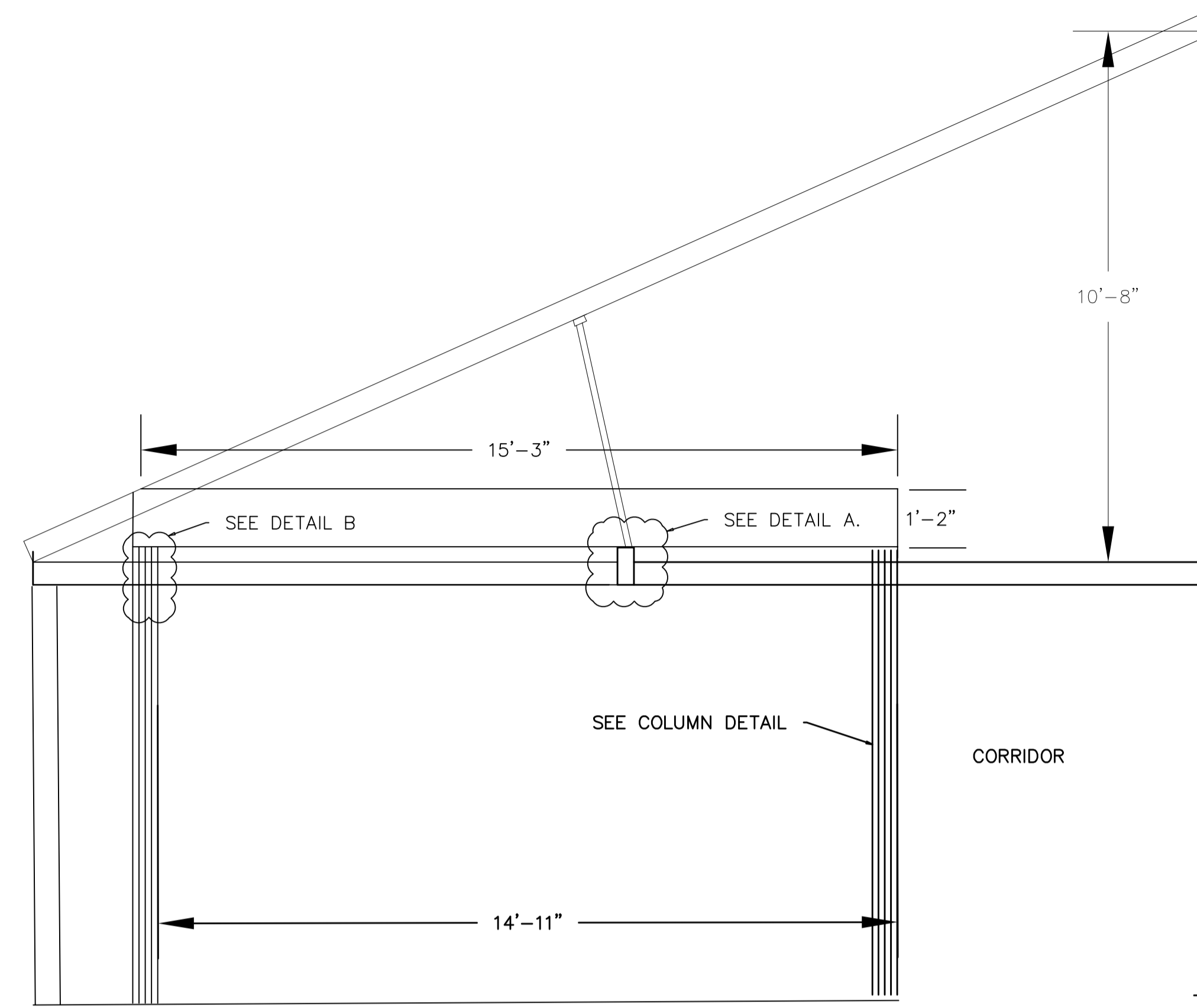
SHEET 1

OUR REDEEMER LUTHERAN CHURCH
 1605 VAN BUREN AVE
 FAYETTEVILLE, NC 28303

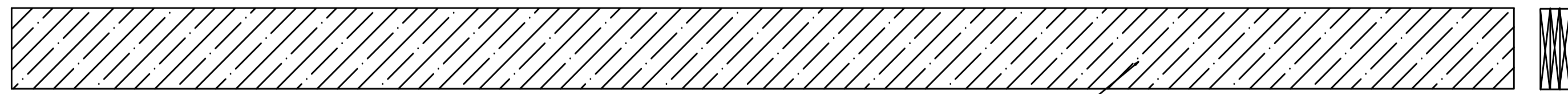
Marshall Engineering Services, PLLC
 7575 McArtans Ford
 Linden, NC 28356
 (910) 850-5874
 Corporate License Number P-0682

NOTES:

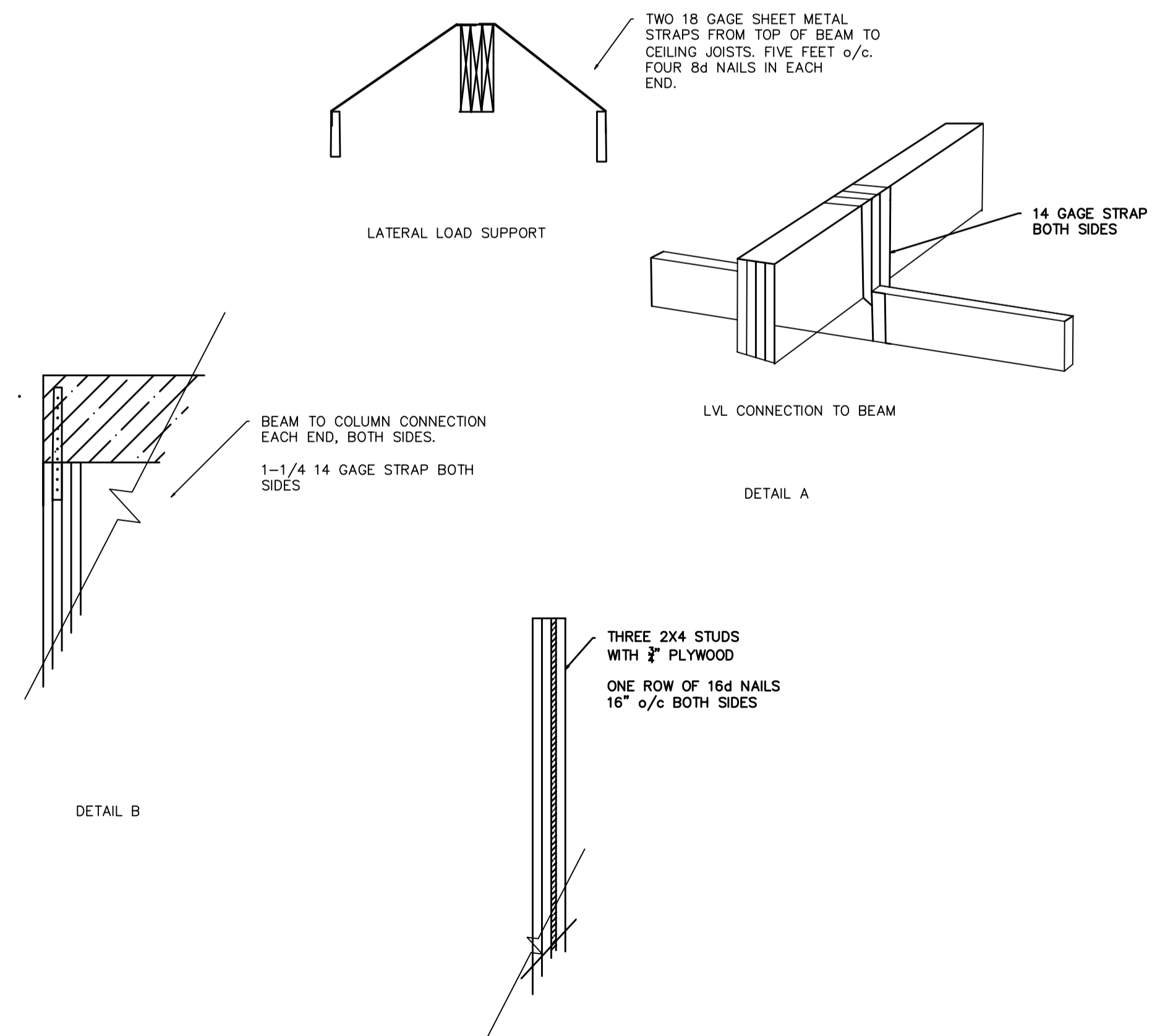
1. CONTRACTOR TO VERIFY ALL DIMENSIONS
2. MINOR DIMENSION CHANGES ALLOWED FOR EASE OF CONSTRUCTION.
3. INSTALL LVLs AND COLUMNS PRIOR TO REMOVING EXSITING COLUMNS
4. USE 14 GAGE STRAPING TO CONNECT EXSITING BEAM TO NEW LVLs AND COLUMN TO BEAM CONNECTION.
5. NEW ATTIC FLOOR MAY BE CONSTRUCTED ABOVE LVLs. Floor LOAD CAN NOT EXCEED 20 lb/sf.
6. USE 18 GAGE STRAPING MATERIAL TO CONNECT TOP OF LVLs TO ADJACENT CEILING JOIST TO PREVENT LATTER MOVEMENT.



CHURCH OFFICE



THREE LVL BEAMS
THREE ROWS OF 16d NAILS-12" o/c
BOTH SIDES.



Marshall Engineering Services, PLLC
7575 McArtans Ford
Linden, NC 28356
(910) 850-5874
Corporate License Number P-0682

OUR REDEEMER LUTHERAN CHURCH
1605 VAN BUREN AVE
FAYETTEVILLE, NC 28303

ASSEMBLY ROOM

SHEET 1